

Villago

Jeff Beach | (602) 553-4120 | jbeach@hogangroupaz.com
Kevin Hogan | (602) 553-4115 | khogan@hogangroupaz.com
Jim Tipton | (602) 553-4110 | jtipton@hogangroupaz.com



➤ **Location:**

NE of McCartney Rd & Pinal Ave,
Casa Grande, AZ

➤ **Description:**

142 Total Lots
83 Lots – 60'x125'
59 Lots – 80'x135'

➤ **Comments:**

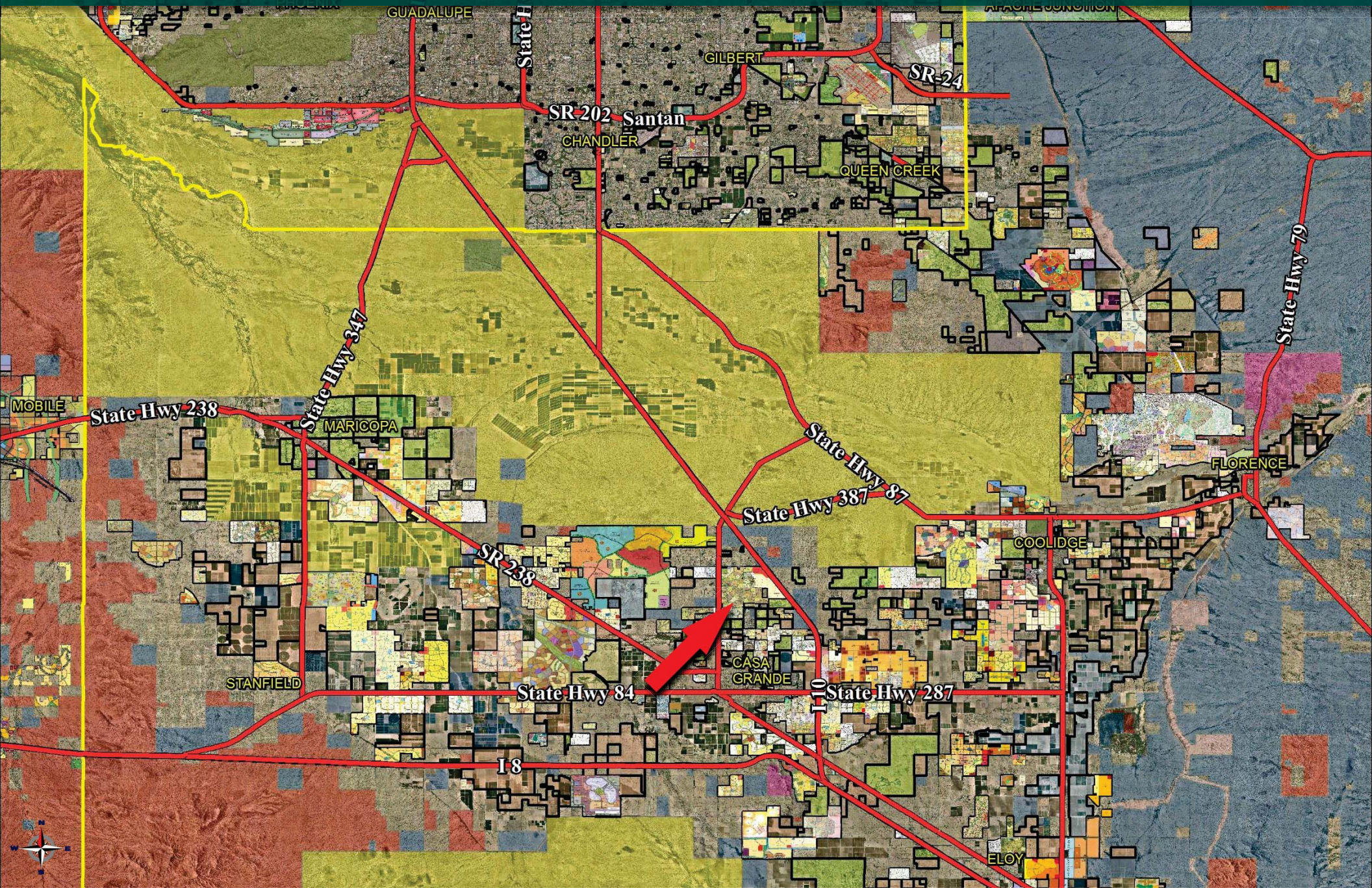
These are fully improved lots within the
nicest masterplan in Casa Grande.

➤ **Purchase Price:**

Submit Offers

Villago

Jeff Beach	(602) 553-4120	jbeach@hogangroupaz.com
Kevin Hogan	(602) 553-4115	khogan@hogangroupaz.com
Jim Tipton	(602) 553-4110	jtipton@hogangroupaz.com



DISCLAIMER : The information contained herein has either been given to us by the owner or obtained from sources that we deem reliable. No warranties or representations, expressed or implied, are made as to the accuracy of the information contained herein, and same is submitted subject to errors, omissions, change or price, rental or other conditions, withdrawal without notice, and to any specific listing conditions, imposed by our principals.

Villago Phase 2A

Jeff Beach | (602) 553-4120 | jbeach@hogangroupaz.com
 Kevin Hogan | (602) 553-4115 | khogan@hogangroupaz.com
 Jim Tipton | (602) 553-4110 | jtipton@hogangroupaz.com

	<u>Sold Price/SF</u>	<u>Average SF</u>	<u>Average Sale Price</u>	<u>Sale Price/List</u>	<u>Cumulative DOM</u>
Villago	\$91	2,016	\$178,321	0.98	64
Duke at Rancho El Dorado	\$92	1,937	\$175,128	0.98	70
Villages at Rancho El Dorado	\$88	2,132	\$184,930	0.99	73
Glennwilde	\$89	1,937	\$169,107	0.98	92
Homestead	\$87	2,000	\$171,654	0.99	71
Rancho Mirage	\$84	2,136	\$175,583	0.99	60
Sorrento	\$86	1,754	\$149,391	0.96	56
*4/19/16-4/19/17, square footage range 1,300s.f.-2,900s.f., 2015 or older construction					

Villago

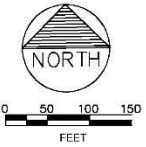
Jeff Beach | (602) 553-4120 | jbeach@hogangroupaz.com
 Kevin Hogan | (602) 553-4115 | khogan@hogangroupaz.com
 Jim Tipton | (602) 553-4110 | jtipton@hogangroupaz.com

SEC. 33, TN.5S RG.6E

515-38_2

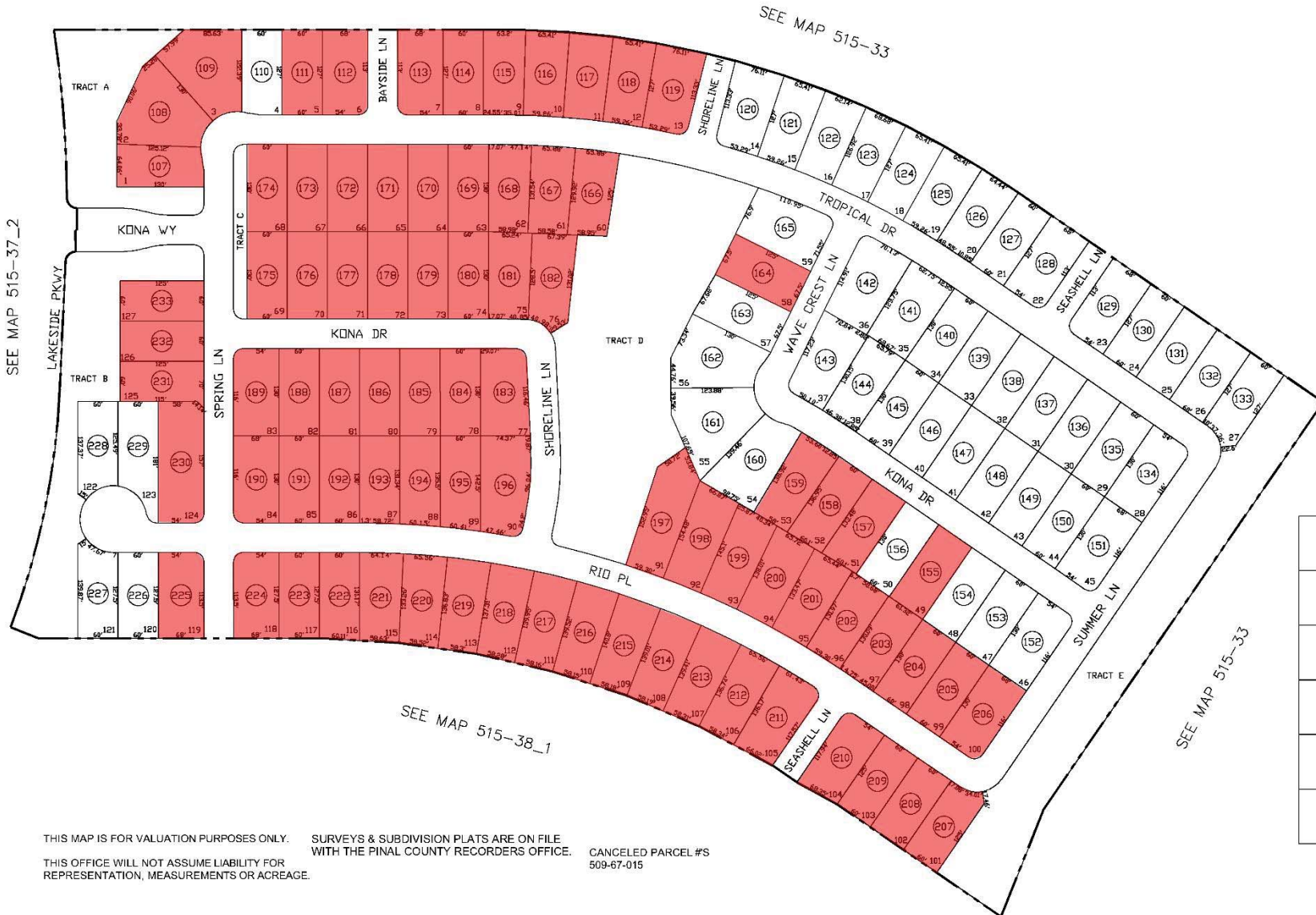
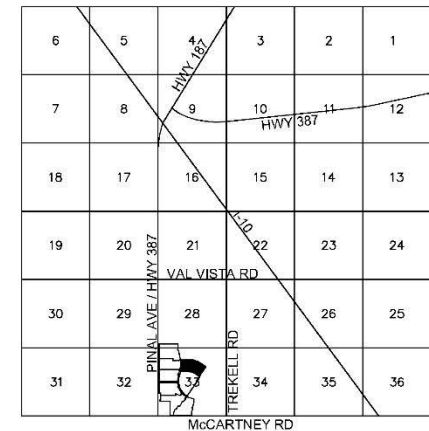
VILLAGO
 PARCEL 22
 CAB F - SLD 032

COMMON AREA 515-38-234A INCLUDES:
 VILLAGO PARCEL 13 TRACTS: A THRU C
 VILLAGO PARCEL 14 TRACTS: A THRU D
 VILLAGO PARCEL 15 TRACTS: A THRU E
 VILLAGO PARCEL 21 TRACTS: A THRU E
 VILLAGO PARCEL 22 TRACTS: A THRU E



8-21-2008
 UPDATED BY: KG

VICINITY MAP



THIS MAP IS FOR VALUATION PURPOSES ONLY. SURVEYS & SUBDIVISION PLATS ARE ON FILE WITH THE PINAL COUNTY RECORDERS OFFICE. CANCELED PARCEL #S 509-67-015

THIS OFFICE WILL NOT ASSUME LIABILITY FOR REPRESENTATION, MEASUREMENTS OR ACREAGE.

PINAL COUNTY ASSESSORS MAP

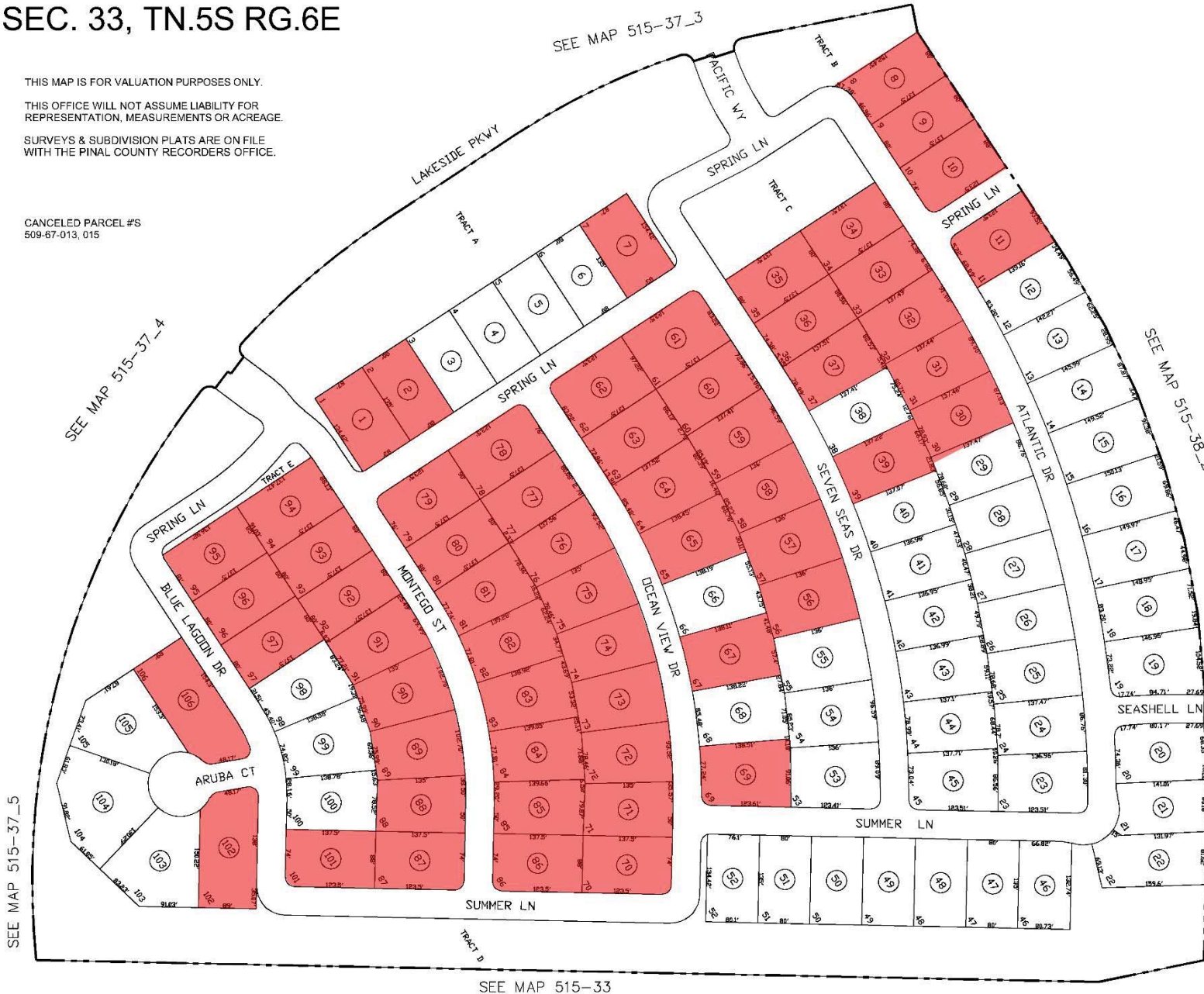
Villago

Jeff Beach | (602) 553-4120 | jbeach@hogangroupaz.com
 Kevin Hogan | (602) 553-4115 | khogan@hogangroupaz.com
 Jim Tipton | (602) 553-4110 | jtipton@hogangroupaz.com

SEC. 33, TN.5S RG.6E

THIS MAP IS FOR VALUATION PURPOSES ONLY.
 THIS OFFICE WILL NOT ASSUME LIABILITY FOR REPRESENTATION, MEASUREMENTS OR ACREAGE.
 SURVEYS & SUBDIVISION PLATS ARE ON FILE WITH THE PINAL COUNTY RECORDERS OFFICE.

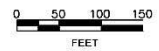
CANCELED PARCEL #'S
 509-67-013, 015



515-38_1

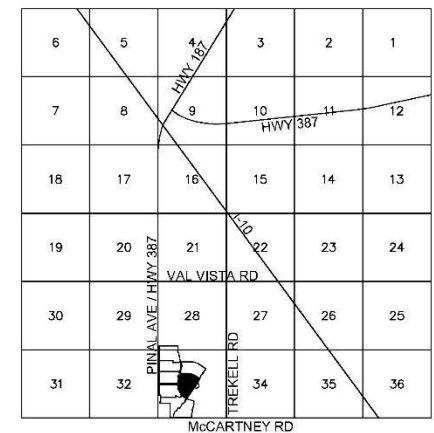
VILLAGO
 PARCEL 21
 CAB F - SLD 028

COMMON AREA 515-38-234A INCLUDES:
 VILLAGO PARCEL 13 TRACTS: A THRU C
 VILLAGO PARCEL 14 TRACTS: A THRU D
 VILLAGO PARCEL 15 TRACTS: A THRU E
 VILLAGO PARCEL 21 TRACTS: A THRU E
 VILLAGO PARCEL 22 TRACTS: A THRU E



8-21-2008
 UPDATED BY: KG

VICINITY MAP



PINAL COUNTY ASSESSORS MAP

DISCLAIMER : The information contained herein has either been given to us by the owner or obtained from sources that we deem reliable. No warranties or representations, expressed or implied, are made as to the accuracy of the information contained herein, and same is submitted subject to errors, omissions, change or price, rental or other conditions, withdrawal without notice, and to any specific listing conditions, imposed by our principals.